



# SEAMAC

STRENGTHENING THE EXCELLENCE OF ADDITIVE  
MANUFACTURING CAPABILITIES

# Pre-processing in AM to ease post processing - practical training

Andrej Jeromen, UL-FME

Univerza v Ljubljani



**TECHNION**  
Israel Institute  
of Technology

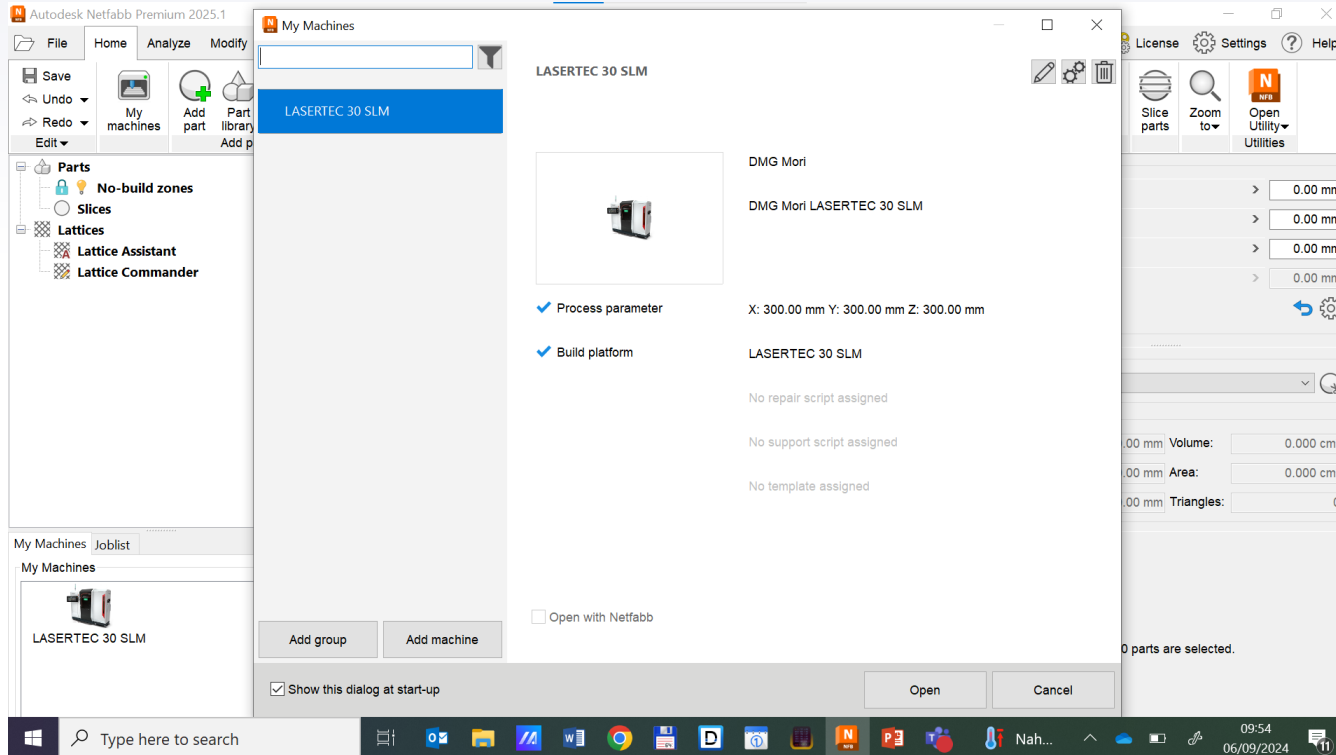


TECHNISCHE UNIVERSITÄT  
BERGAKADEMIE FREIBERG  
Die Ressourcenuniversität. Seit 1765.

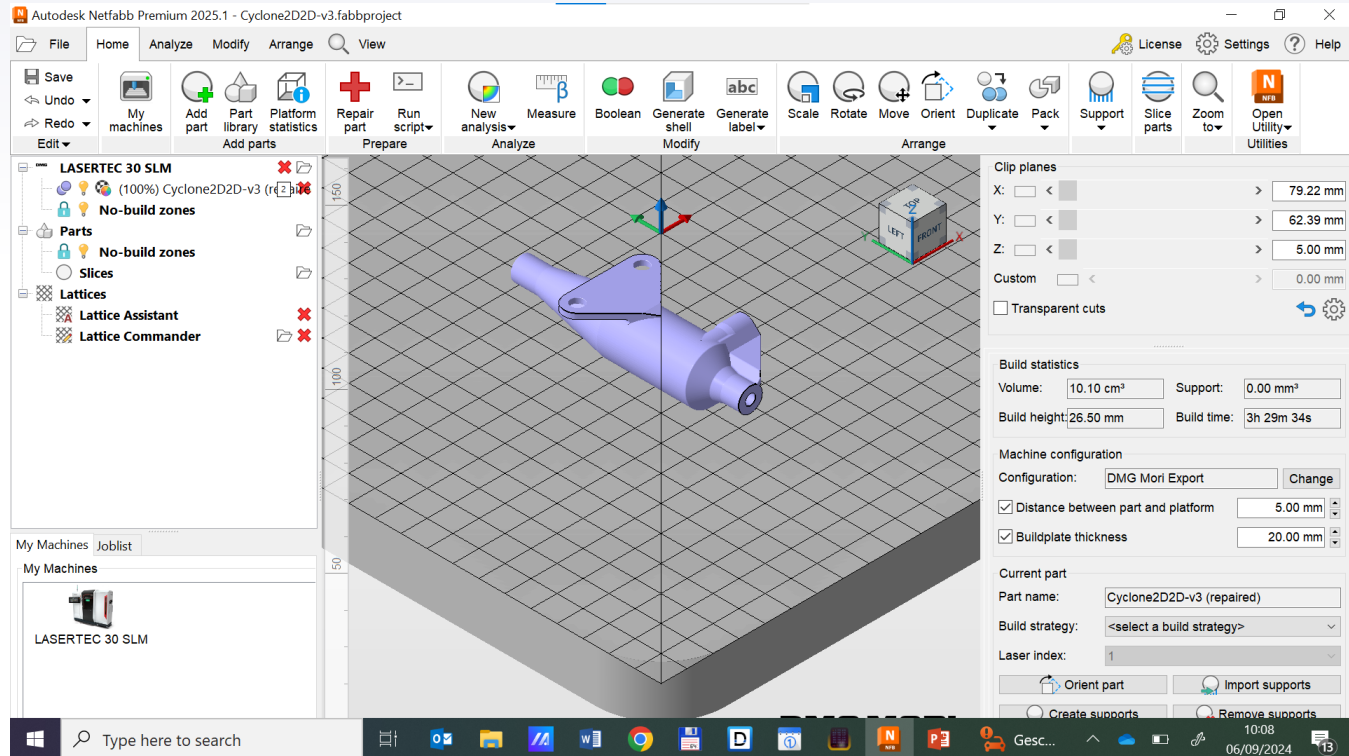


**Funded by  
the European Union**

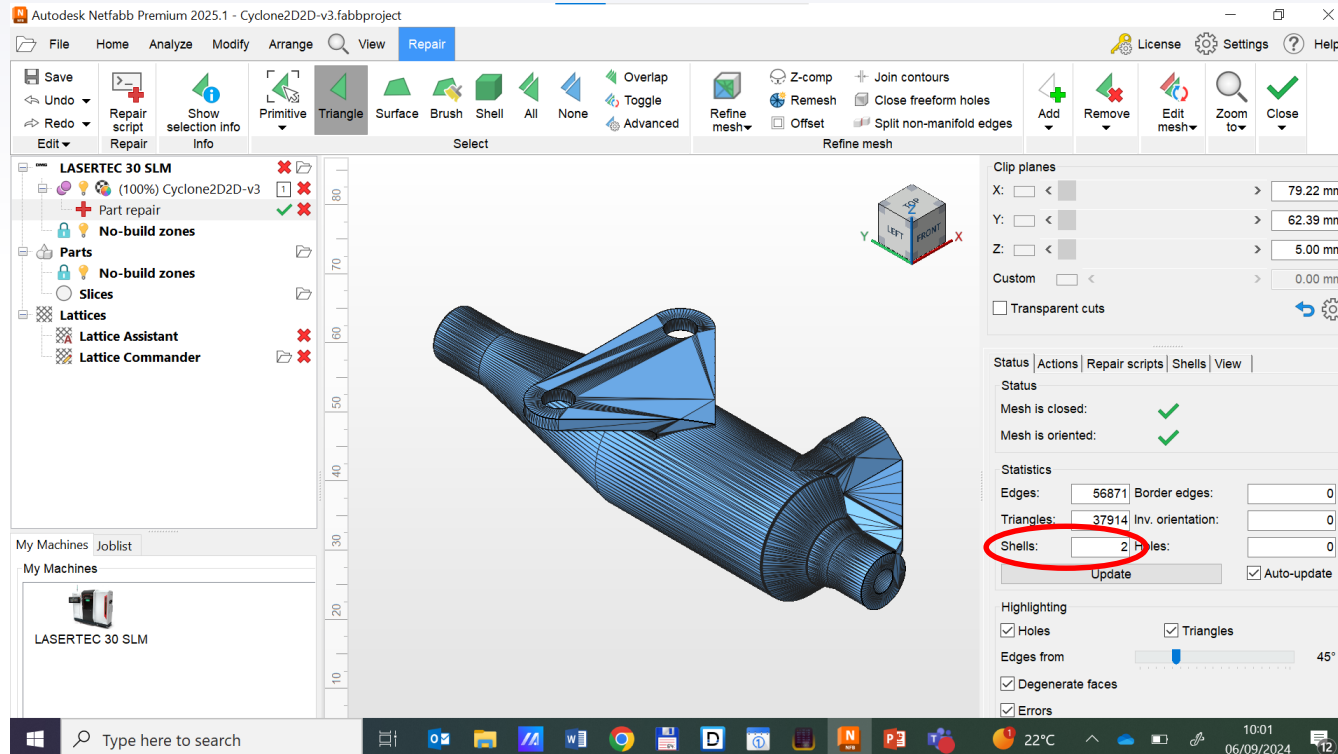
# Opening Autodesk Netfabb, selecting machine



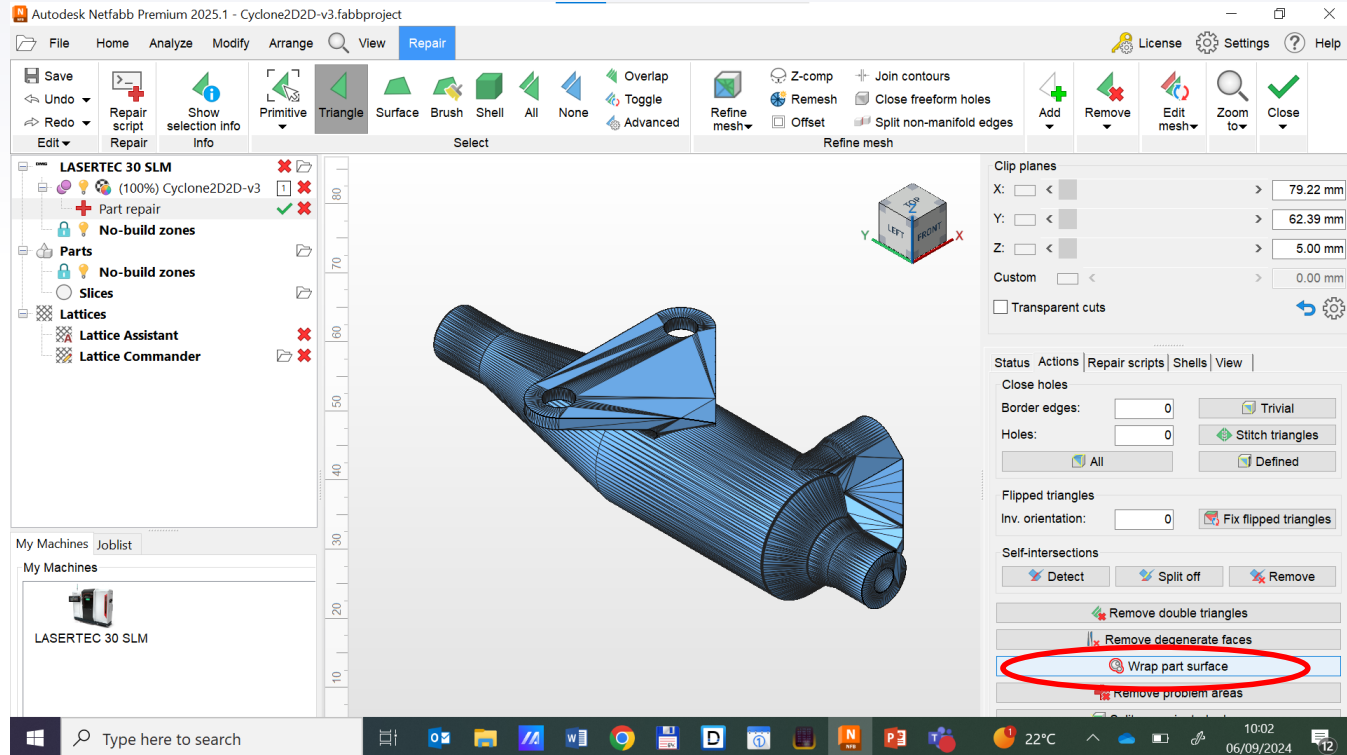
# Importing a STL 3D model of a cyclone



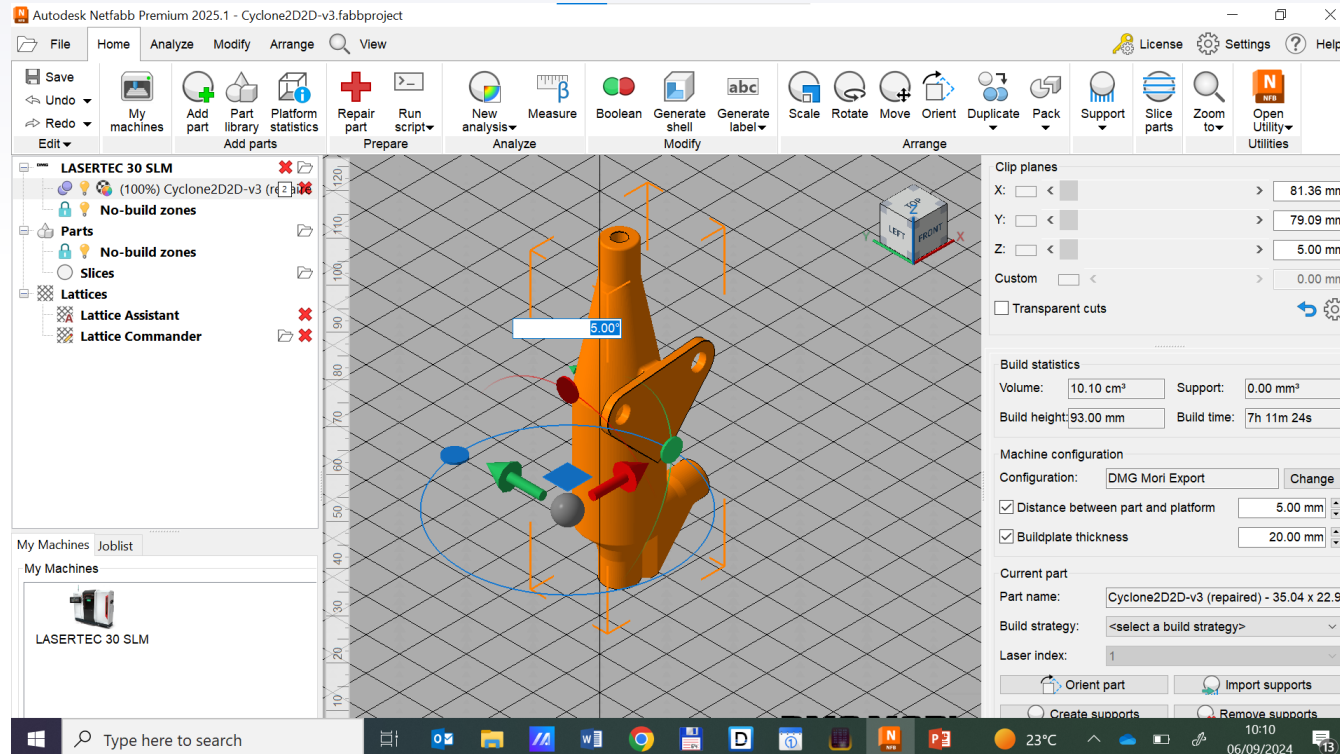
# Checking the STL file for errors



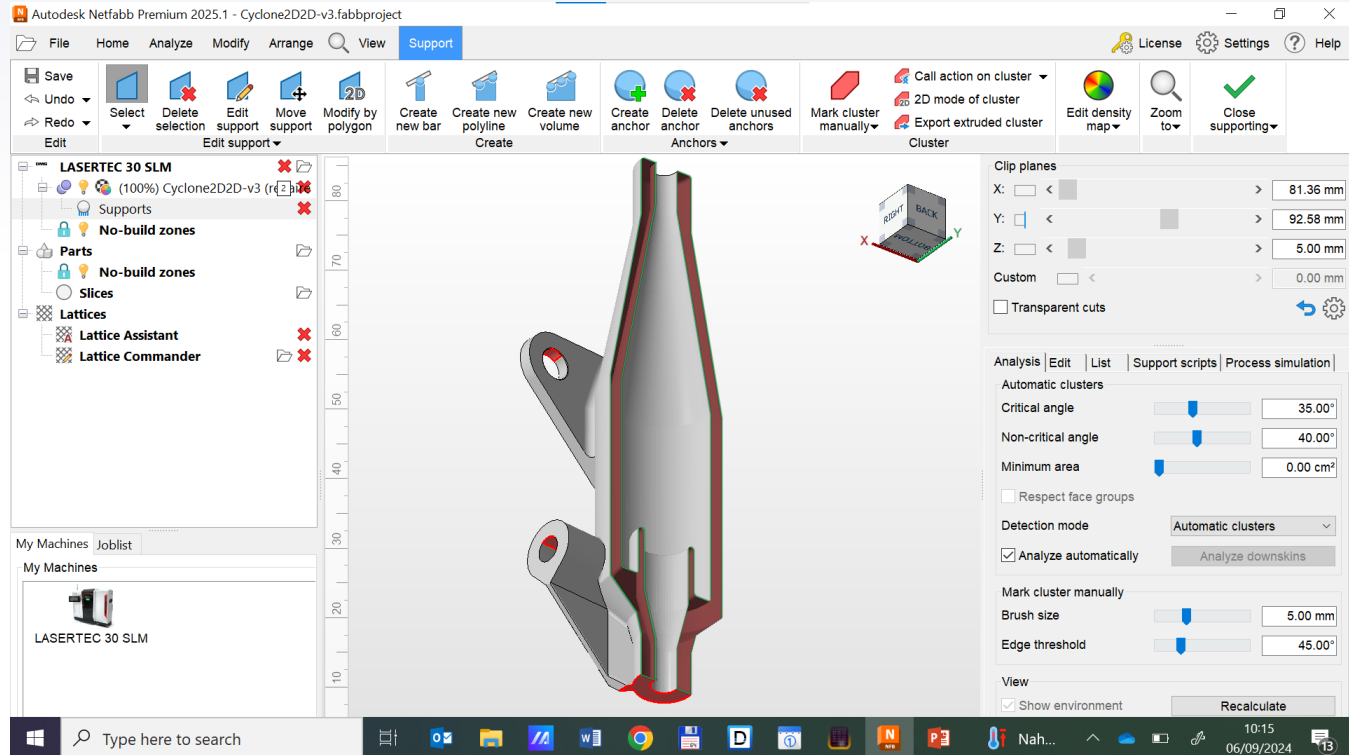
# Wrapping part surface to impose a single shell



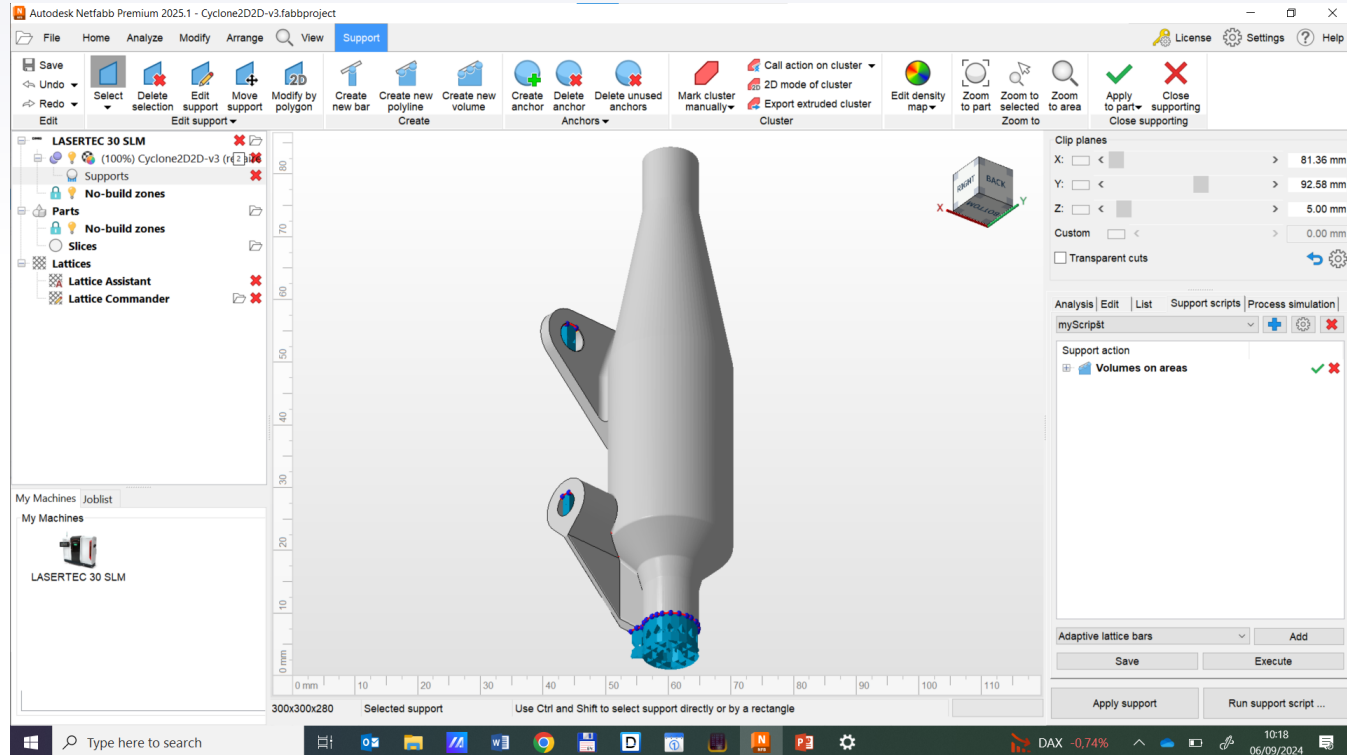
# Orienting the part



# Checking which surfaces need supporting

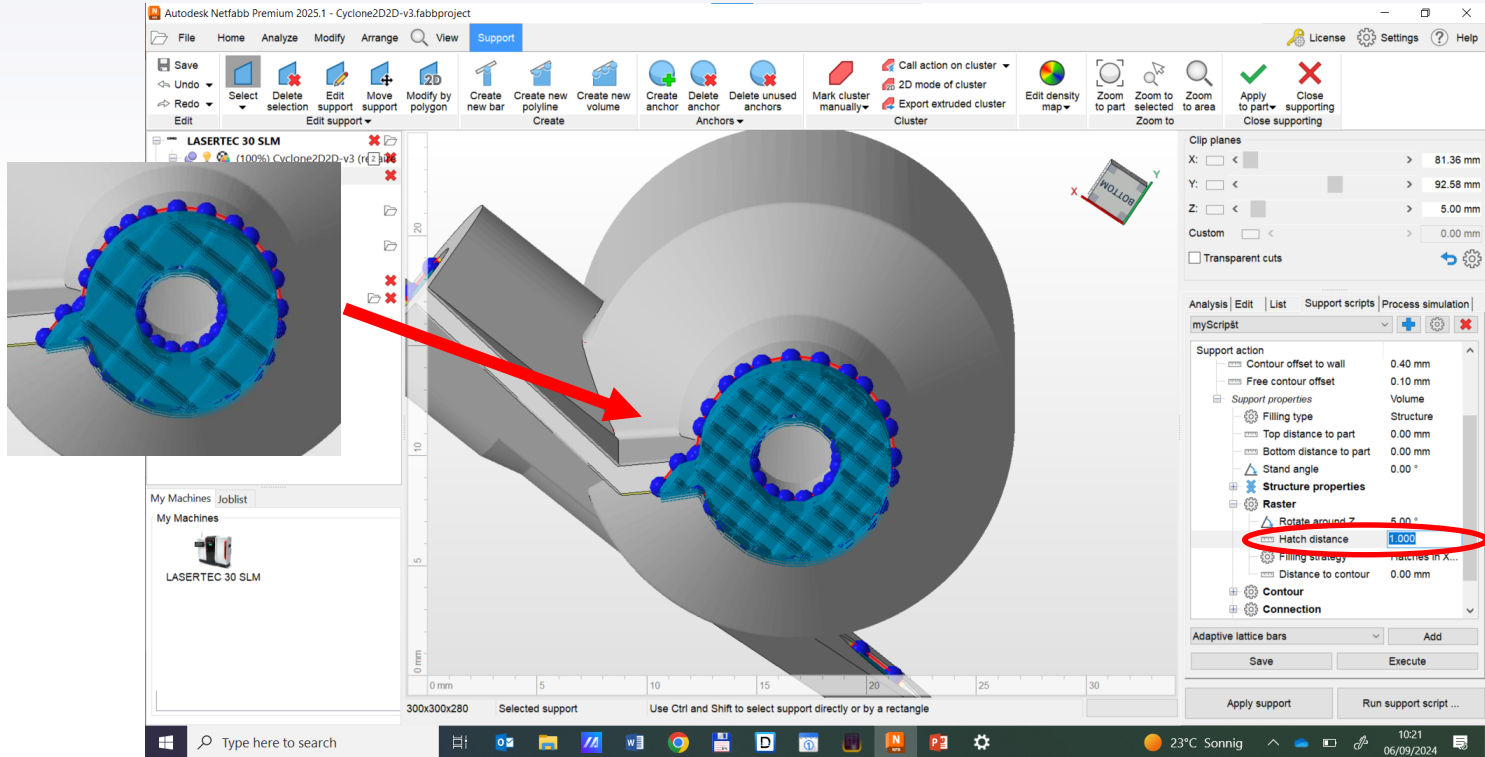


# Generating block supports

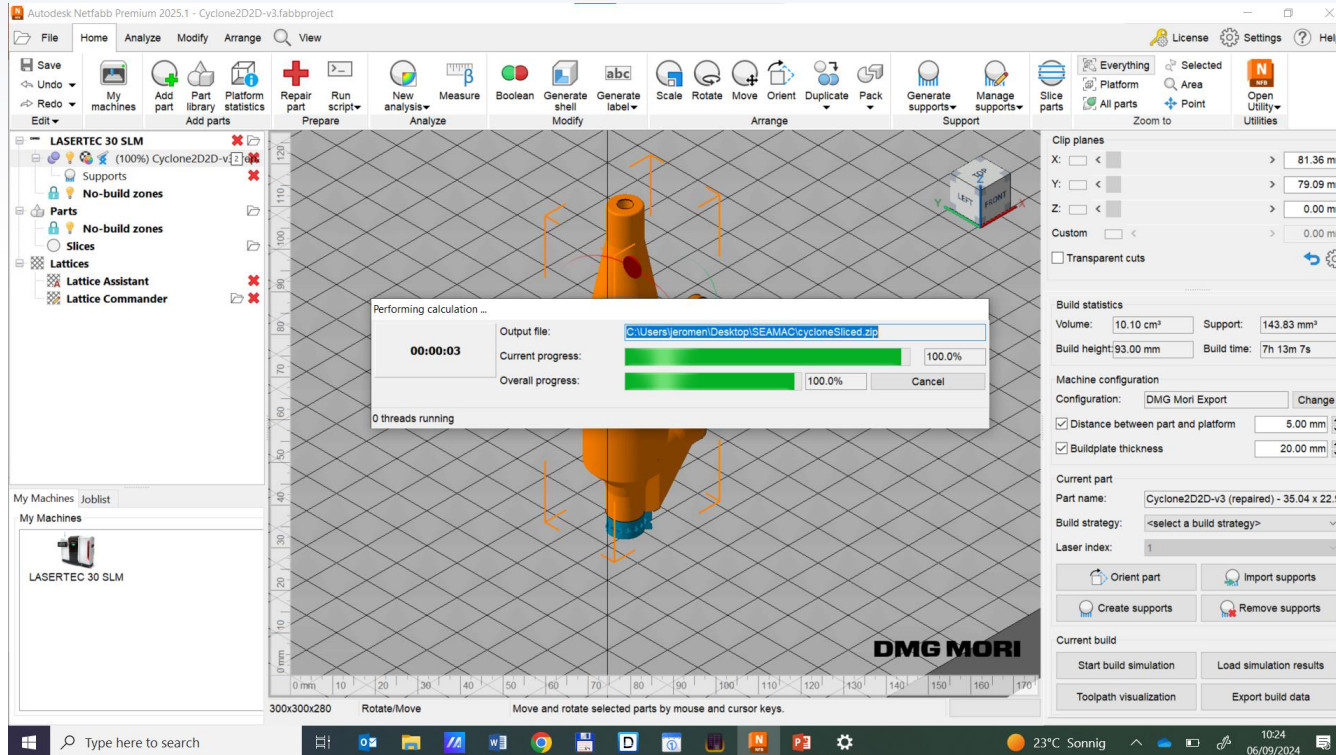




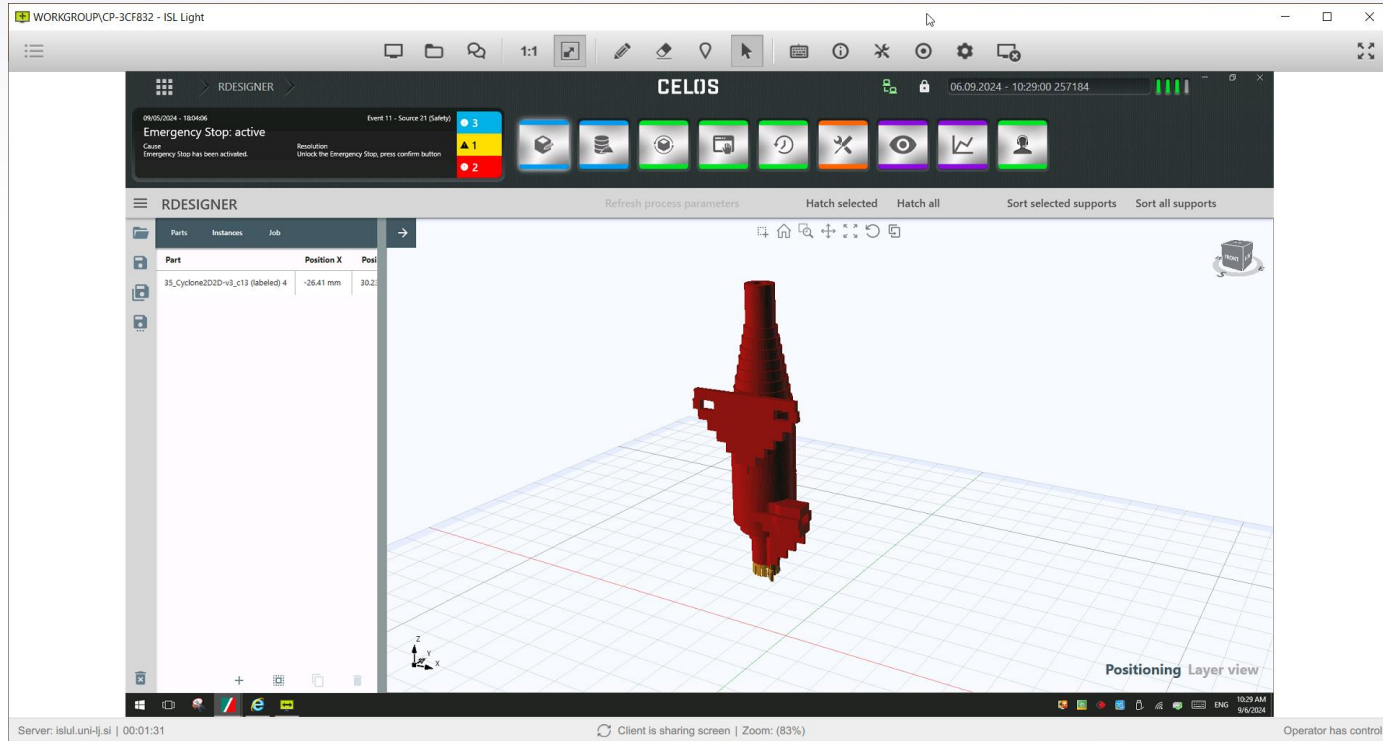
# Adjusting support parameters



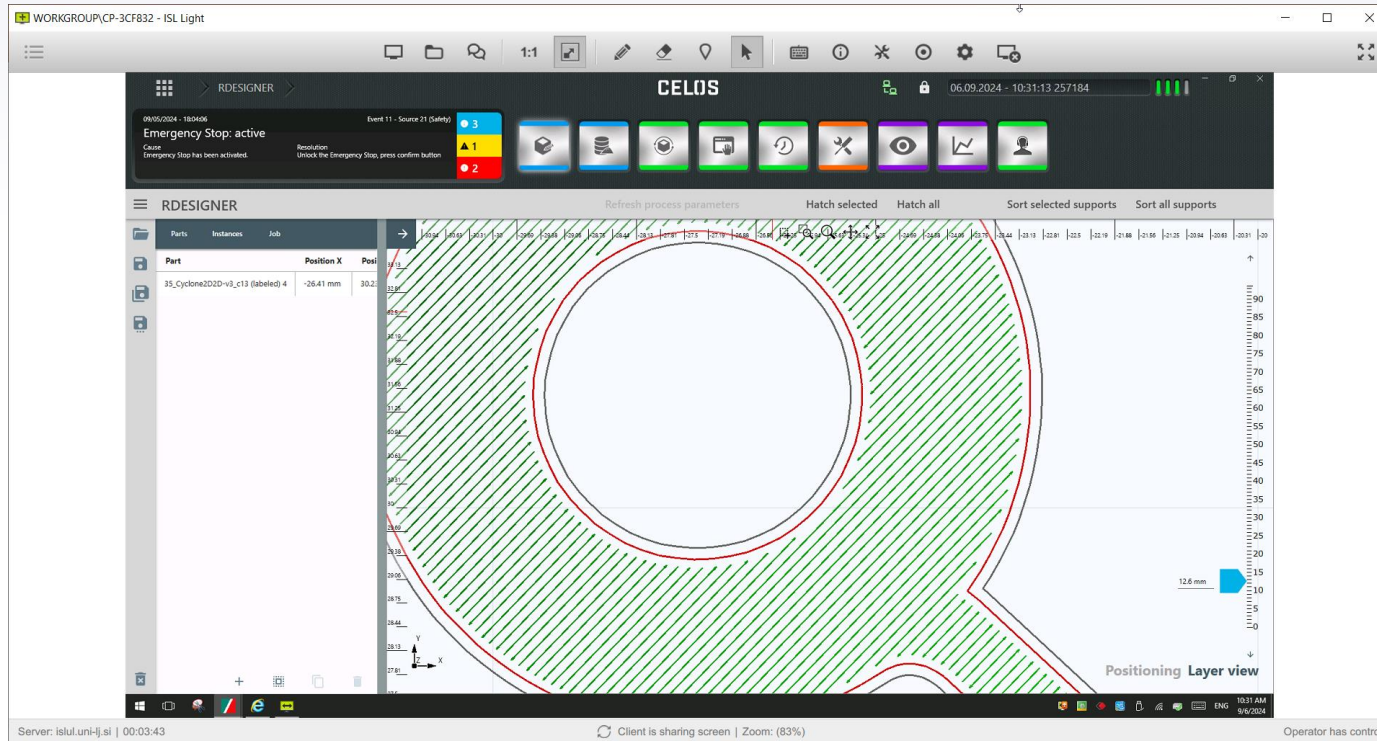
# Slicing and exporting in CLI format



# Importing sliced data to LPBF machine



# Perform hatching and creating a job file



# Running print simulation

